

SPRING GX

For international
students

Call for PhD applicants for admission in Spring 2026
Application Period Jan. 16, 2026 (Fri.)–Jan. 30, 2026 (Fri.)

The University of Tokyo **"Fostering Advanced Human Resources to Lead Green Transformation (GX)" project** (Project officer : Professor Shin-ichi Ohkoshi) supported by support for Pioneering Research Initiated by Next Generation (SPRING) of Japan Science and Technology Agency (JST), is a project involving approximately **1,307 doctoral students** (including those in 4-year doctoral programs) from across the university. New SPRING GX has started in April 2024.

We are calling **50 international students entering the doctoral course in Spring 2026.**

Recruitment number

Prospective international doctoral students for admission in Spring 2026

(including 4-year doctoral course)

See the application page for details on eligible applicants.

ca. 50 students

Application Period

Jan. 16, 2026 (Fri.)

– Jan. 30, 2026 (Fri) 15:00

Financial Support

Research incentive

1st year (2026 April–2027 March)

180,000 yen per month

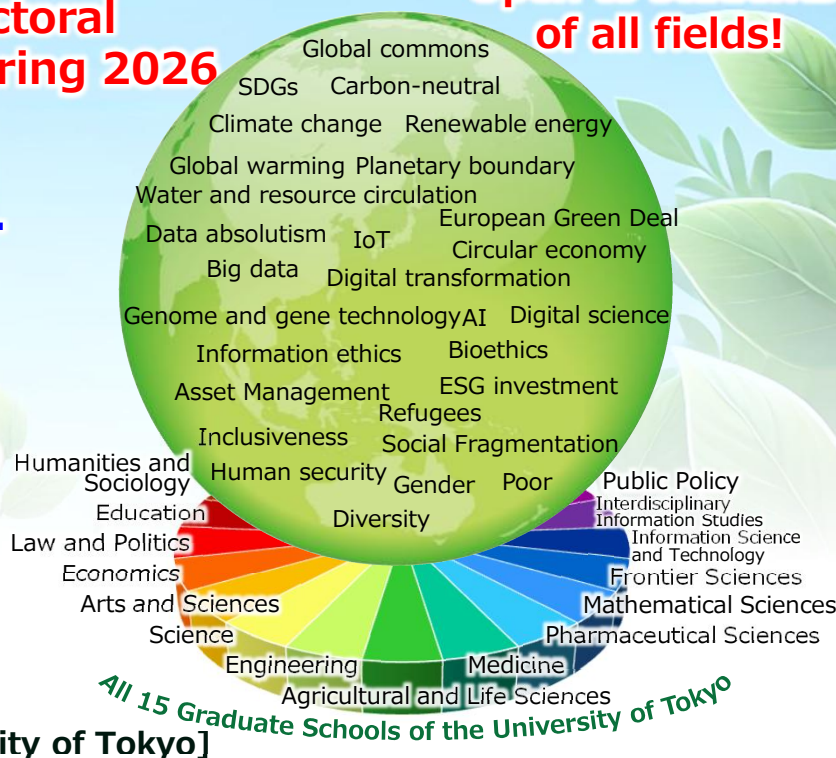
2nd and 3rd year (2027 April–2029 March)

90,000 yen per month [from The University of Tokyo]

Research expenses

360,000 yen per year will be provided. Additionally, overseas travel expenses, etc., will be paid through a review process

Open to students of all fields!



**In order to solve global issues,
we must confront and solve a wide
variety of problems across all fields!**

Project officer:
Shin-ichi Ohkoshi

Aims and Contents of the PhD Student Support Project

The project (SPRING GX) aims to produce globally competent researchers who will contribute to realizing a Green Transformation (GX) in all fields on a large scale. The University of Tokyo will invest all existing assets to (1) create an environment where students with deep expertise and high-level research ability can freely conduct challenging and emergent research to feed their curiosity, (2) foster an "awakened culture" where GX encompasses of the future vision of society and each student's own research is related to societal issues, and (3) develop transferable skills to fully demonstrate professional abilities in society. For this purpose, three core programs and advanced skill training programs will be developed to realize a high portability of the student support environment.

Project HP



Recruitment HP

