

Supervisor	Shunsuke Kamijo Assoc. Professor	Lab. Location	Institute of Industrial Science	Research Area	Applied Multimedia
------------	-------------------------------------	---------------	---------------------------------	---------------	--------------------

Our Lab. has motivation to improve mobility and location services by various sensor fusions.

<http://kmj.iis.u-tokyo.ac.jp/>

• Autonomous Vehicles

Computer vision for Surveillance

Pedestrian detection and Behavior analysis.

Lane detection and keeping,

Collision avoidance

Self-Localization :

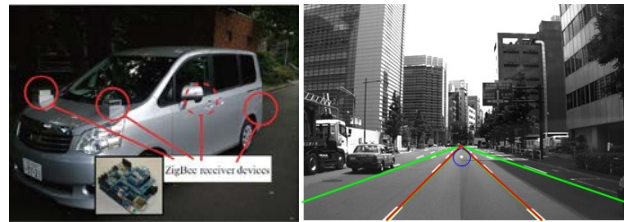
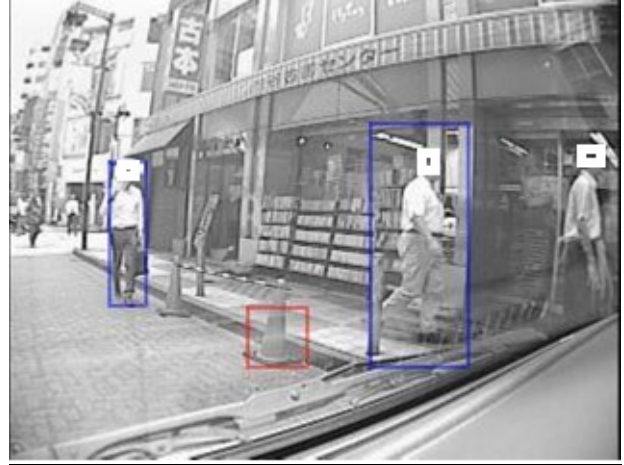
3D structure recognition for Localization

High accurate GNSS positioning

Urban 3D models :

SLAM (Simultaneous Localization and Mapping) by Sensor fusion of Computer Vision, LIDAR, and GNSS.

System integration and Motion planning



• Pedestrian Support by SMART Devices

Positioning by GNSS, Dead Reckoning, and WiFi fingerprinting

Application of Location services for pedestrian and tourists.

